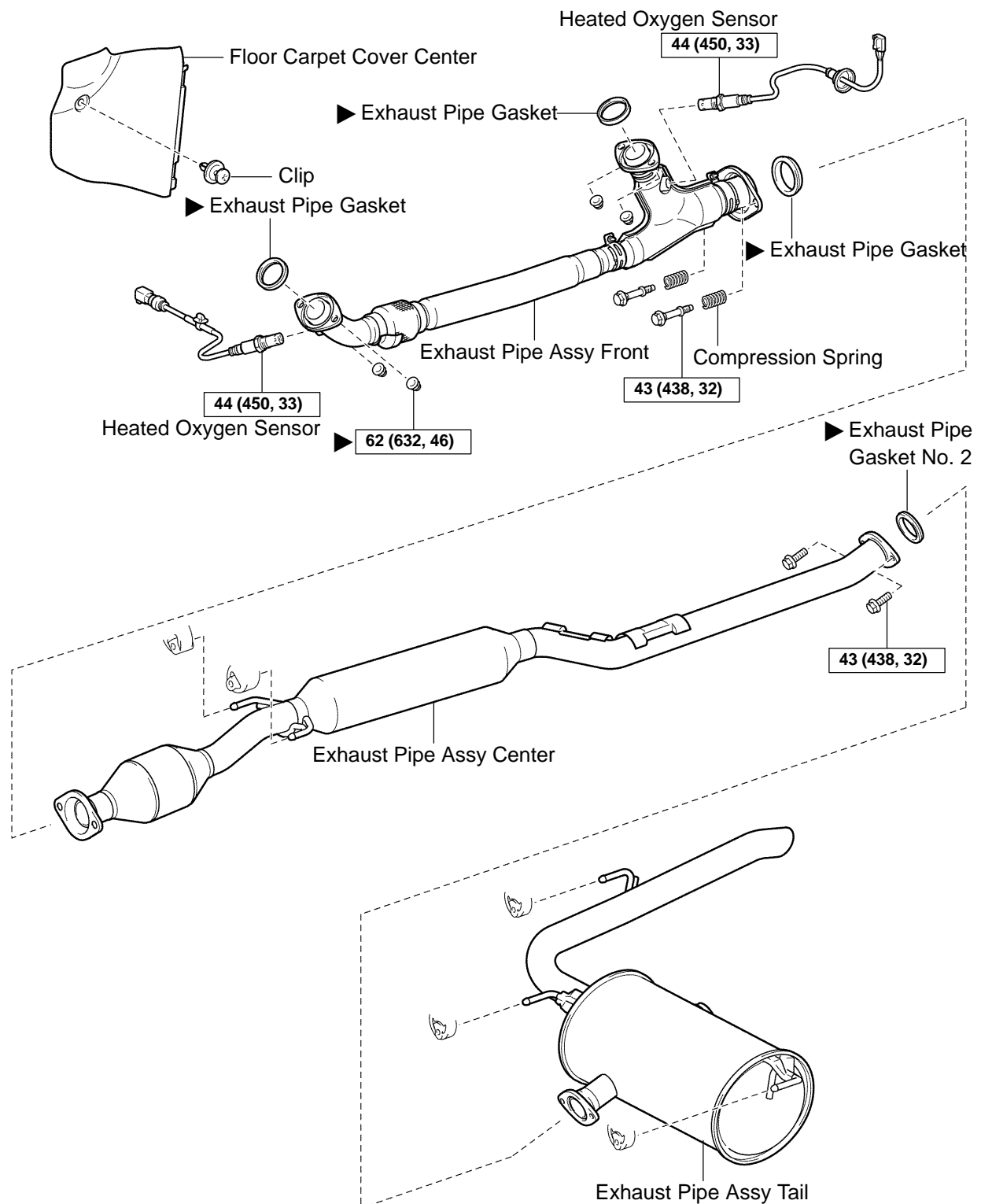


# EXHAUST PIPE ASSY (FF)

## COMPONENTS

1509G-01



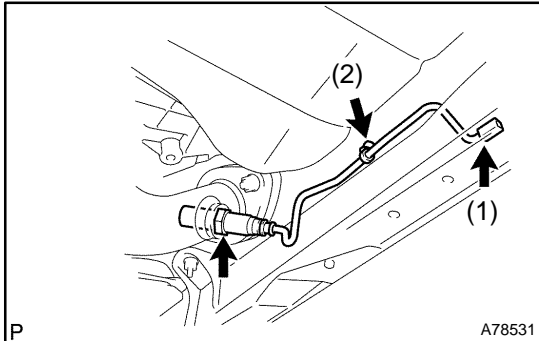
N·m (kgf·cm, ft·lbf) : Specified torque

► Non-reusable part

A78530

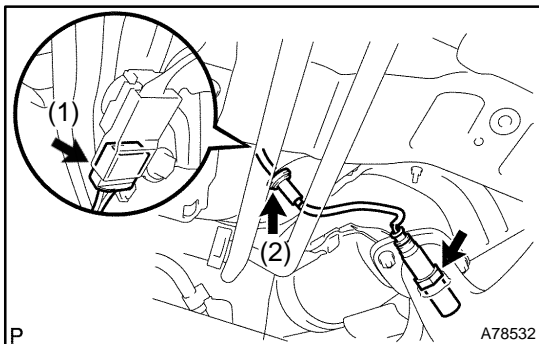
## Removal & Installation and Disassembly & Reassembly

### 1. REMOVE FLOOR CARPET COVER CENTER LH (See page 71-10)



### 2. REMOVE HEATED OXYGEN SENSOR

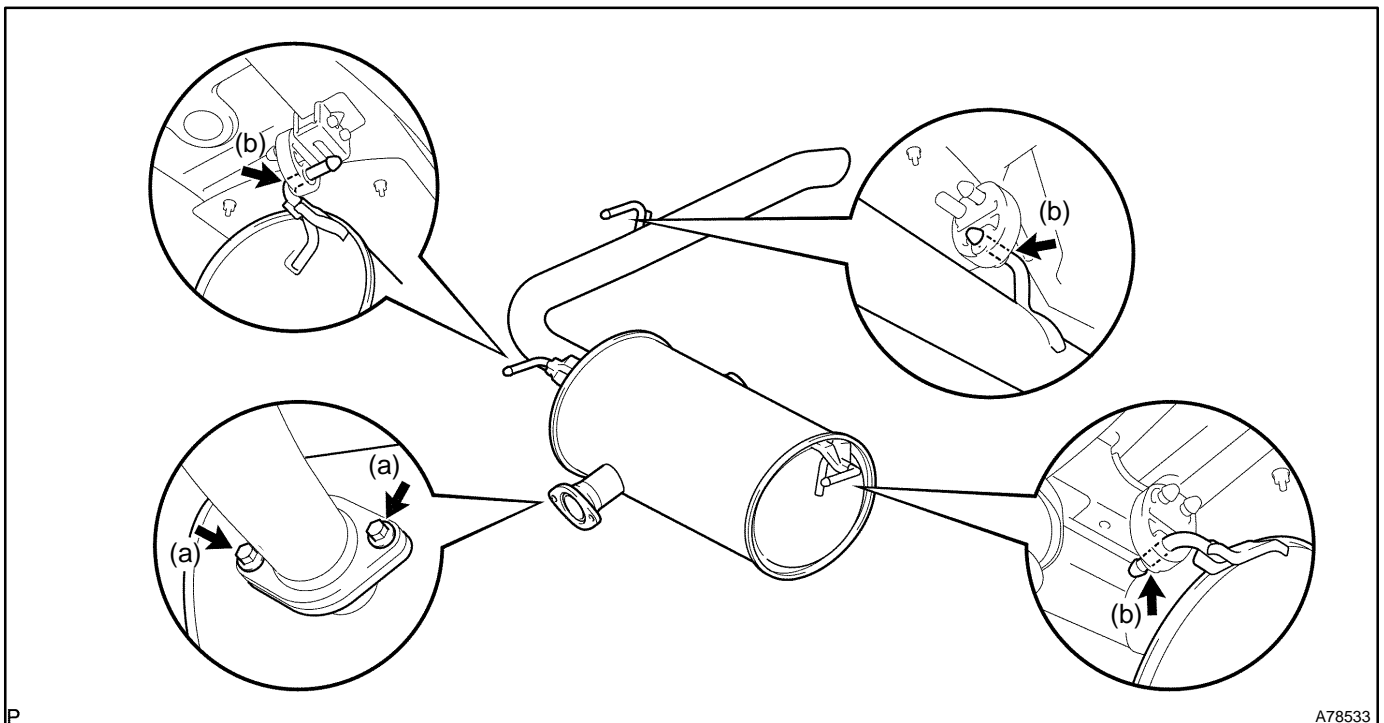
- (a) Remove the heated oxygen sensor. (Bank 2 Sensor 2)
- (1) Disconnect the heated oxygen sensor connector.
  - (2) Remove the wire harness clamp.
  - (3) Remove the heated oxygen sensor.



- (b) Remove the heated oxygen sensor. (Bank 1 Sensor 2)
- (1) Disconnect the heated oxygen sensor connector.
  - (2) Remove the grommet.
  - (3) Remove the heated oxygen sensor.

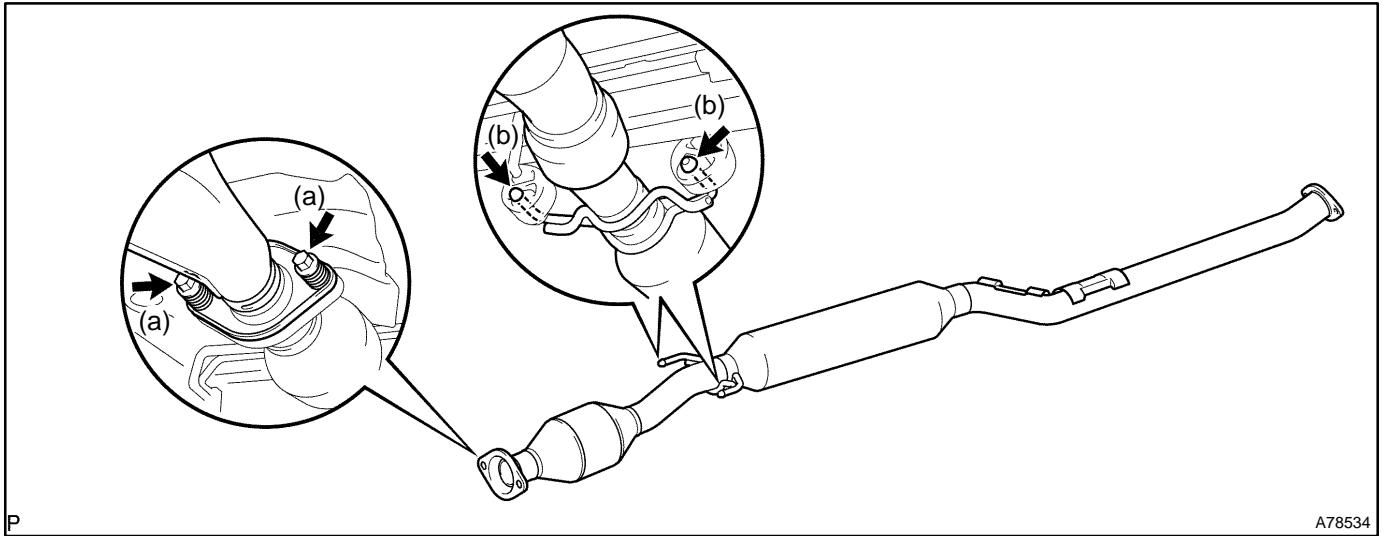
### 3. REMOVE EXHAUST PIPE ASSY TAIL

- (a) Remove the 2 bolts.
- (b) Remove the exhaust pipe tail and the gasket from the 3 exhaust pipe supports.



**4. REMOVE EXHAUST PIPE ASSY CENTER**

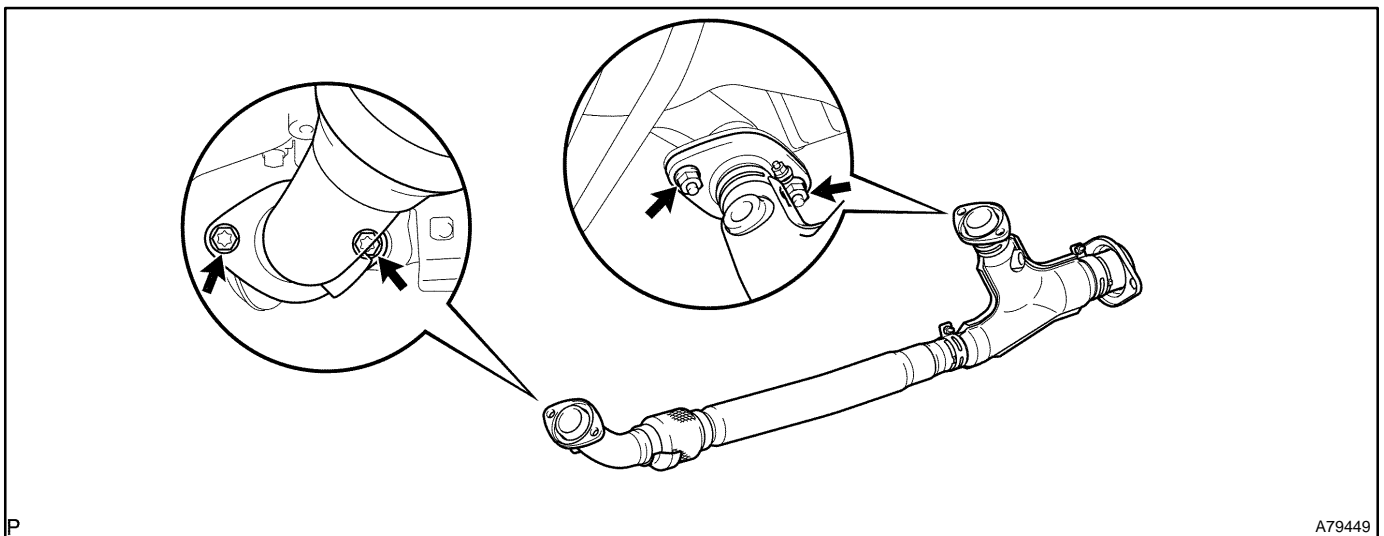
- (a) Remove the 2 bolts and the 2 compression springs.
- (b) Remove the exhaust pipe center from the 2 exhaust pipe supports.



- (c) Remove the gasket from the exhaust pipe front.

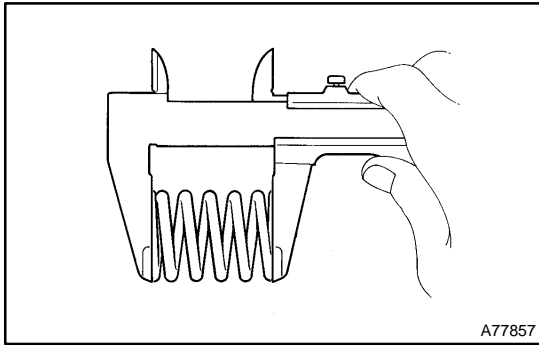
**5. REMOVE EXHAUST PIPE ASSY FRONT**

- (a) Remove the 4 nuts, the exhaust pipe front and the 2 gaskets.

**6. INSTALL EXHAUST PIPE ASSY FRONT**

- (a) Install 2 new gaskets and the exhaust pipe front with 4 new nuts.

**Torque: 62 N·m (632 kgf·cm, 46 ft·lbf)**

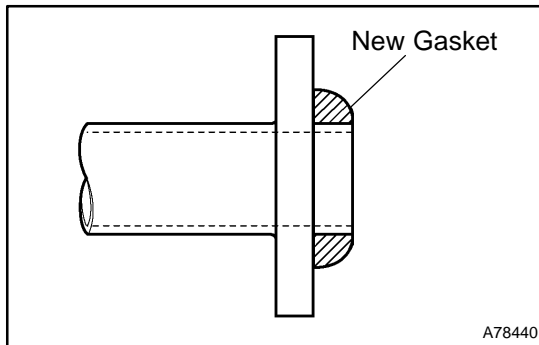


## 7. INSTALL EXHAUST PIPE ASSY CENTER

- (a) Compression spring inspection
  - (1) Using vernier calipers, measure the free length of the compression spring.

**Minimum free length: 38.86 mm (1.5299 in.)**

If the free length is less than minimum, replace the compression spring.



- (b) Install a new gasket to the exhaust pipe front as shown in the illustration.
- (c) Install the exhaust pipe center to the 2 exhaust pipe supports.
- (d) Tighten the 2 compression springs and the 2 bolts.  
**Torque: 43 N·m (438 kgf·cm, 32 ft·lbf)**

## 8. INSTALL EXHAUST PIPE ASSY TAIL

- (a) Install a new gasket and the exhaust pipe tail to the 3 exhaust pipe supports.
- (b) Tighten the 2 bolts.

**Torque: 43 N·m (438 kgf·cm, 32 ft·lbf)**

## 9. INSTALL HEATED OXYGEN SENSOR

**Torque: 44 N·m (450 kgf·cm, 33 ft·lbf)**

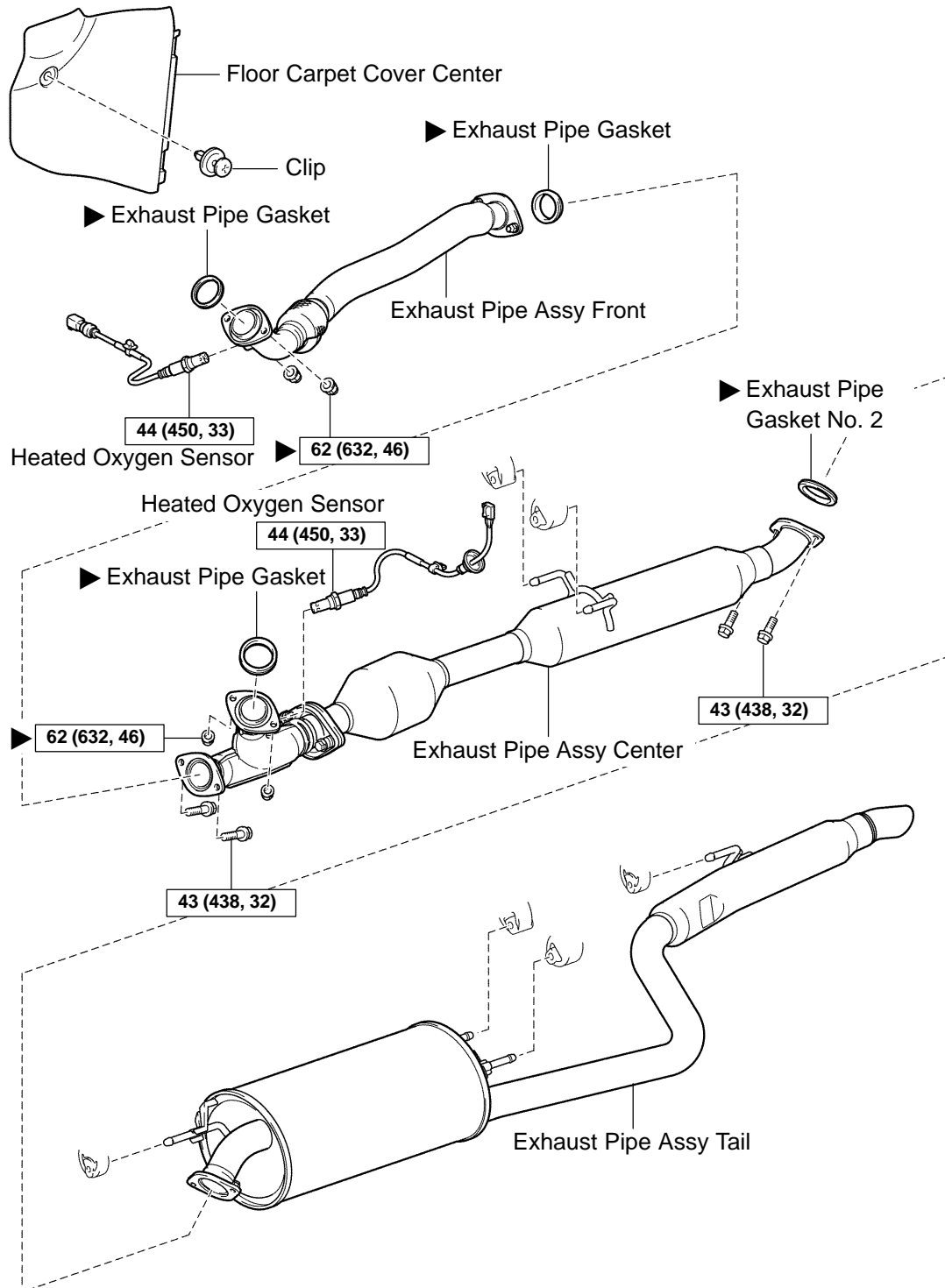
## 10. CHECK FOR EXHAUST GAS LEAKS

## 11. INSTALL FLOOR CARPET COVER CENTER LH

# EXHAUST PIPE ASSY (4WD)

## COMPONENTS

1509L-01



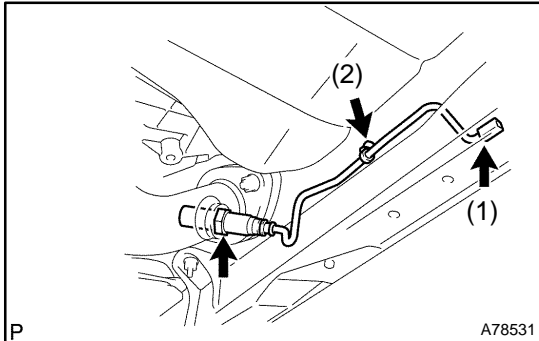
N·m (kgf·cm, ft·lbf) : Specified torque

► Non-reusable part

A79450

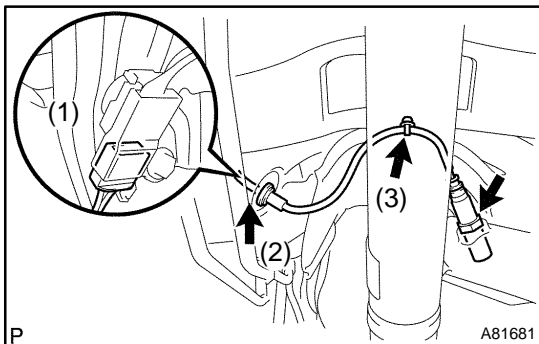
## Removal & Installation and Disassembly & Reassembly

### 1. REMOVE FLOOR CARPET COVER CENTER LH (See page 71-10)



### 2. REMOVE HEATED OXYGEN SENSOR

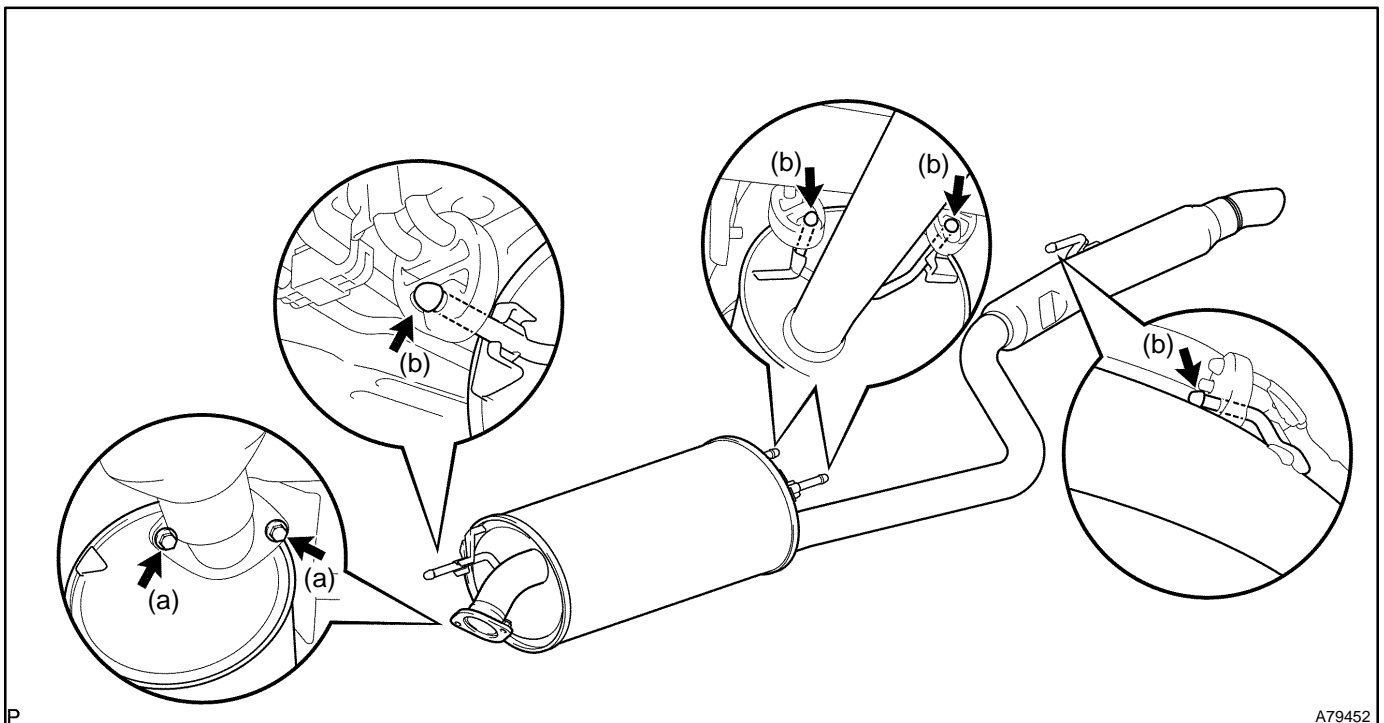
- (a) Remove the heated oxygen sensor. (Bank 2 Sensor 2)
- (1) Disconnect the heated oxygen sensor connector.
  - (2) Remove the wire harness clamp.
  - (3) Remove the heated oxygen sensor.



- (b) Remove the heated oxygen sensor. (Bank 1 Sensor 2)
- (1) Disconnect the heated oxygen sensor connector.
  - (2) Remove the grommet.
  - (3) Remove the wire harness clamp.
  - (4) Remove the heated oxygen sensor.

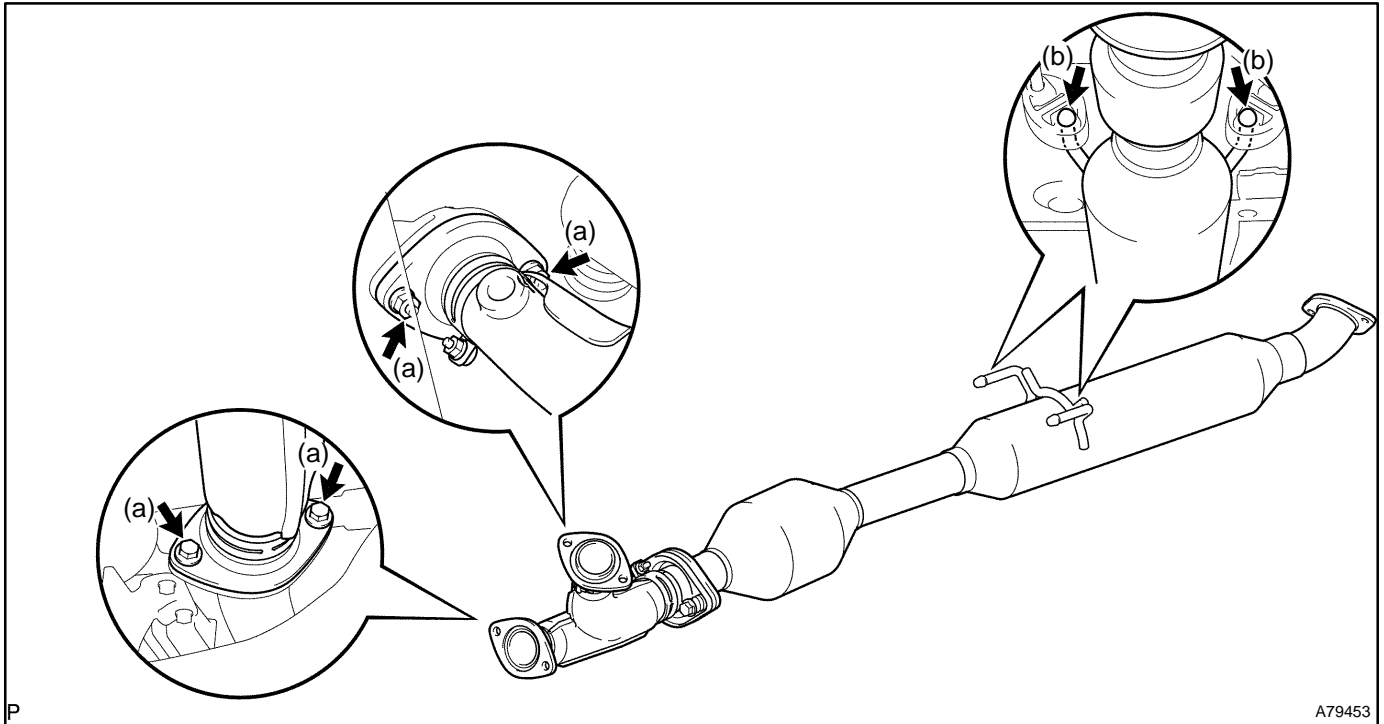
### 3. REMOVE EXHAUST PIPE ASSY TAIL

- (a) Remove the 2 bolts.
- (b) Remove the exhaust pipe tail and the gasket from the 4 exhaust pipe supports.

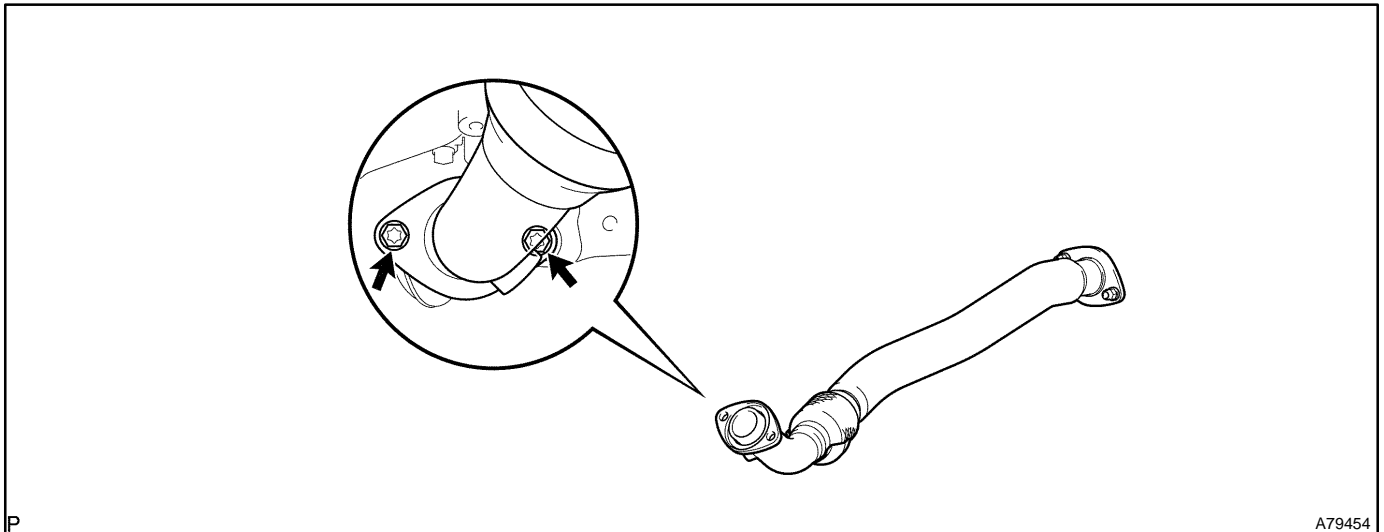


**4. REMOVE EXHAUST PIPE ASSY CENTER**

- (a) Remove the 2 bolts and 2 nuts.
- (b) Remove the exhaust pipe center and the 2 gaskets from the 2 exhaust pipe supports.

**5. REMOVE EXHAUST PIPE ASSY FRONT**

- (a) Remove the 2 nuts, the exhaust pipe front and the gasket.

**6. INSTALL EXHAUST PIPE ASSY FRONT**

- (a) Install a new gasket and the exhaust pipe front with the 2 nuts.

**Torque: 62 N·m (632 kgf·cm, 46 ft·lbf)**

**7. INSTALL EXHAUST PIPE ASSY CENTER**

- (a) Install 2 new gaskets and the exhaust pipe center to the 2 exhaust pipe supports.
- (b) Tighten the 2 bolts and 2 new nuts.

**Torque:****43 N·m (438 kgf·cm, 32 ft·lbf) for bolt****62 N·m (632 kgf·cm, 46 ft·lbf) for nut****8. INSTALL EXHAUST PIPE ASSY TAIL**

- (a) Install a new gasket and the exhaust pipe tail to the 4 exhaust pipe supports.
- (b) Tighten the 2 bolts.

**Torque: 43 N·m (438 kgf·cm, 32 ft·lbf)****9. INSTALL HEATED OXYGEN SENSOR****Torque: 44 N·m (450 kgf·cm, 33 ft·lbf)****10. CHECK FOR EXHAUST GAS LEAKS****11. INSTALL FLOOR CARPET COVER CENTER LH**